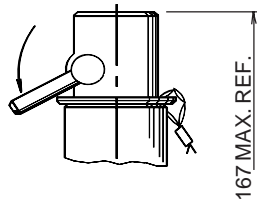


ILLUSTRATED SHOWING
TYPES
SEALED
NO EASING GEAR

ALTERNATIVE TOP FITTING



TYPE SL
SEALED LEVER
EASING GEAR

PARTS LIST & MATERIAL SPECIFICATION

		68013
1	INLET SEAT	ST.STL. BS EN 10088-3 1.4404 (316L)
2	PLUNGER/SEAL	ST.STL. BS EN 10088-3 1.4404 (316L) / TO SUIT APPLICATION
3	BODY	ST.STL. BS EN 10288-3 1.4408 (316) SA-351 CF8M
4	SPRING	ST.STL. BS EN 10270-3 1.4310 (302)
5	SPINDLE	ST.STL. BS EN 10088-3 1.4057 (431)
6	ADJUSTER	ST.STL. BS EN 10088-3 1.4401 (316)
7	CAP	ST.STL. BS EN 10088-3 1.4401 (316)
8	COVER	ST.STL.
9	WIRELOCKING	ST.STL. & LEAD

TECHNICAL DATA

P.E.D. 97/23/EC

Type examination module B, Cert. No. 2002/043/8923.

Quality management system module D, Cert. No. EDS 0002011/01.

Designed in accordance with BS 6759 & BS EN ISO 4126-1

TECHNICAL DATA

Relieving pressure

= Set pressure +25%

Reseating pressure

= Set pressure - max 20% down to 3 Bar.g.

= Below 3 Bar.g. = 0.6 Bar.g.

Maximum set pressure

= 27 Bar.g. SUBJECT TO CLAMP PRESSURE RATING

Minimum set pressure

= 0.7 Bar.g.

Flow area

= 147.4 mm²

Inlet bore diameter

= 13.7 mm

Derated coefficient of discharge K_{dr}

= 0.57

Temperature Range

= Subject to seal material.

FOR FURTHER INFORMATION, CONVERSION FACTORS INSTALLATION AND OPERATION INSTRUCTIONS ETC. SEE TECHNICAL INFORMATION SECTION.



SEETRU LIMITED

ALBION DOCKSIDE WORKS, BRISTOL. BS1 6UT
TELEPHONE +44 (0) 117 927 9204, FAX +44 (0) 117 929 8193
www.seetru.com enquiries@seetru.com

CLEAN SERVICE 13mm Nominal Bore
DIRECT SPRING LOADED ENCLOSED
DISCHARGE SAFETY VALVE FOR LIQUIDS

ENCLOSED DISCHARGE
13mm NOM. BORE SERIES M/2
TYPE 68013 ST. STL.

SHT 1 OF 2 SHTS

FLOW CHART

- TO CALCULATE INTERMEDIATE FLOWS SEE TECHNICAL INFORMATION SECTION C.

- FOR GREATER FLOWS REFER TO SEETRU, FOR LOWER FLOWS REFER TO 10mm BORE TYPE 67010 DATA SHEET

SET PRESSURE Bar.g	0.7	2	4	6	8	10	12	14	16	18	20	22	24	26	27
RATED DISCHARGE * CAPACITY IN ACCORDANCE WITH BS 6759, WATER AT 15°C (kg/hr)	3764	6759	9560	11708	13519	15116	16558	17885	19119	20279	21376	22419	23416	24372	24837

* DISCHARGING TO ATMOSPHERE

VALVE SELECTION CHART

Standard seat sizes shown, other sizes may be available.

INLET CONNECTION	OUTLET CONNECTION	ORDERING CODE	TOP FITTING CODE	
			S	SL
3/4" CLAMP	G 1 (1" BSP PARALLEL)	68013A	5758	5848
1" CLAMP			5768	5858

Example: Ordering code **68013A 5758** is St.Stl. construction Sealed, no easing gear, type S, with 3/4" Clamp inlet connection, 1" BSP parallel outlet connection with Perfluoroelastomer (Isolast®) seals & wirelocked.

Seal material: Last digit of ordering code calls up Perfluoroelastomer (Isolast®) seal.

When other material is required last digit changes to:

- 6. ETHYLENE PROPYLENE Temperature (-40°C to 150°C)
- 7. PERFLUOROELASTOMER (ISOLAST®) Temperature (-15°C to 190°C)

For advice on seal material selection refer to Technical Information Section A.

APPLICATION

1. Safety valve for food industry & other hygienic applications including clean steam & gas applications.
2. For protection of installations in which clean service is required only on the inlet.
e.g. normal operation wetted parts.
3. Generally in accordance with 'ASME BPE 2005 Bioprocessing Equipment'.
4. Economic design giving small compact size, with high discharge capacities.
5. Elastomer soft sealing for high level sealing tightness at operating pressure, with minimum leakage for cost effective operation.

SURFACE FINISH

Process Contact Surface

In accordance with ASME BPE-2005 Table SF-5.

Surface designation R_a Max 15 µinches, 0.4 µm, Electropolished.

Other Surfaces

Not greater than 60 µinches, 1.5 µm.

SEAL MATERIAL

Elastomer soft sealing specifically developed for food & pharmaceutical industries.

Complaint to

1. FDA 21 CFR 177.2600
2. United States Pharmacopoeia (USP) Class VI
3. SP3A Sanitary Standards for Multiple Use Rubber Dairy Equipment No 18-03.

CONNECTIONS

Inlet

Tri-Clamp® compatible generally in accordance with ASME BPE 2005 & BS 4825-3.

Outlet

Pipe threads (G) where pressure tight joints are not made on the thread in accordance with BS EN ISO 228. For other threads & clamp connections consult Seetru.



SEETRU LIMITED

ALBION DOCKSIDE WORKS, BRISTOL. BS1 6UT
TELEPHONE +44 (0) 117 927 9204, FAX +44 (0) 117 929 8193
www.seetru.com enquiries@seetru.com

CLEAN SERVICE 13mm Nominal Bore
DIRECT SPRING LOADED ENCLOSED
DISCHARGE SAFETY VALVE FOR LIQUIDS

ENCLOSED DISCHARGE
13mm NOM. BORE SERIES M/2
TYPE 68013 ST. STL.

SHT 2 OF 2 SHTS